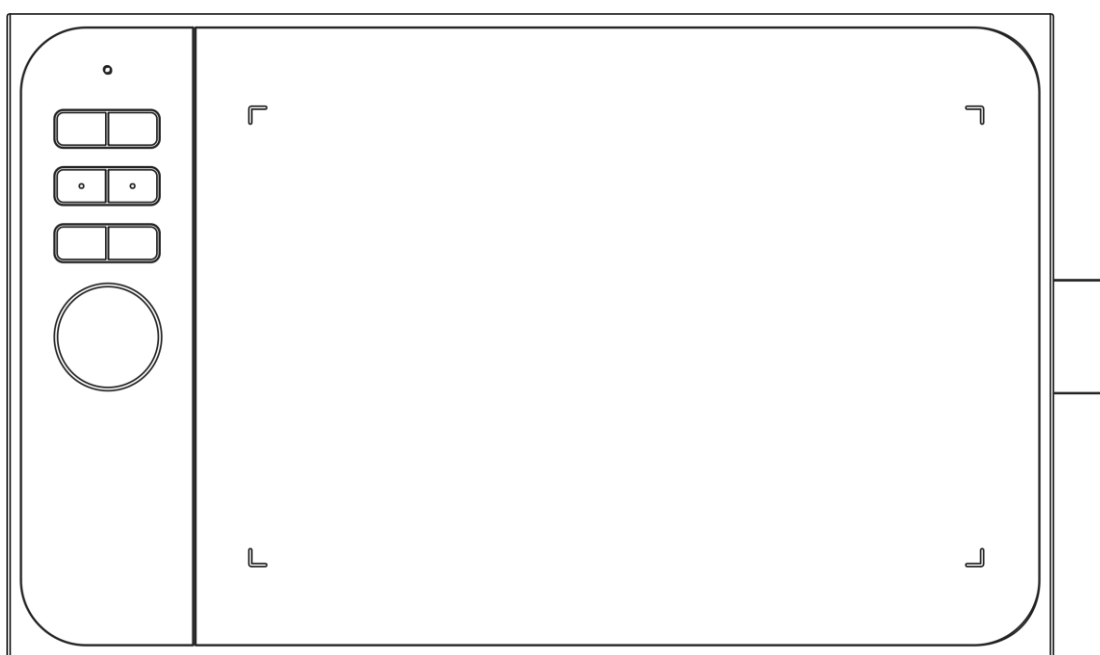


Graphic Pen Tablet

Star 06C Manual

Windows 10,8,7 and Mac 10.10 or above



Safety Precautions

This manual uses the following symbols to ensure that the XP-PEN Tablet is used correctly and safely. Be sure to read and observe the Safety Precautions.



Do not use this product in a control system area that requires a high degree of safety and reliability.

In such a system, this product could negatively affect other electronic devices and could malfunction due to the effect of those devices.



Turn the power off in areas where use of electronic devices is prohibited.

Turn the power off your tablet when onboard an aircraft or in any other location where use of electronic devices is prohibited, otherwise it may negatively affect other electronic devices in the area.

Unplug the USB connector from this product and turn the power off.



Keep the product away from infants and young children.

Accessories to this gadget may present a choking hazard to small children. Keep all accessories away from infants and young children.



CAUTION

Do not place this product on unstable surfaces.

Avoid placing this product on unstable, tilted surfaces or any locations exposed to excessive vibrations. This may cause the tablet to fall or impact surfaces which can result in damage and/or malfunction to the tablet.

Do not place heavy objects on top of this product.

Do not place heavy objects on the product. Do not step on, or place your body weight on this product as this may cause damage.



Avoid extreme high or low-temperature exposure to the XP-Pen tablet.

Do not store this product in areas that drop below 5°C or above 40°C. Avoid locations with excessive temperature fluctuations. This may result in damage to the product and its components.



Do not disassemble

Do not disassemble or modify this product. Doing so may expose you to heat, fire, electric shock and injury.

Disassembling the product will void your warranty.



Do not use alcohol for cleaning

Never use alcohol, thinner, benzene or other mineral solvents that may discolor and cause deterioration to the product.



Do not expose to water

Be cautious of water and all liquids that may be near the tablet. Exposure to water or liquid could damage the product.



CAUTION



Avoid placing metallic objects and especially magnetic objects on the tablet.

Placing metallic and/or magnetic objects on this product during operation may cause malfunction or permanent damage.



Do not strike the pen against hard objects.

Striking the pen against hard objects can cause damage to the pen.



Avoid gripping the pen too tightly, and DO NOT use excessive weight/pressure on the Express Key button and pen.

The stylus pen is a high-precision instrument. Avoid pressing too tightly on the Express Key button, and keep any objects from covering the pen to avoid potential damage. Keep the pen away from areas of high dust, contaminants, or any particulate matter that can effect or damage the pen.

Limitation of Liability

1. XP-Pen shall in no event be liable for damages resulting from fires or earthquakes, including those caused by third parties and those arising from user misuse, abuse or neglect.
2. XP- Pen shall in no event be liable for incidental damages- including but not limited to loss of business income, interruption of business activities, corruption or loss of data – that arise from use or failure to use this product correctly.
3. XP- Pen shall in no event be liable for damage resulting from uses not documented in this manual.
4. XP- Pen shall in no event be liable for damages or malfunction arising from the connection to other devices or use of third party software.

Contents

[I. Product Overview](#)

[II. Stylus](#)

[III. Pen tip replacement](#)

[IV. Driver installation](#)

[Windows](#)

[Mac](#)

[V. Driver installation](#)

[Windows](#)

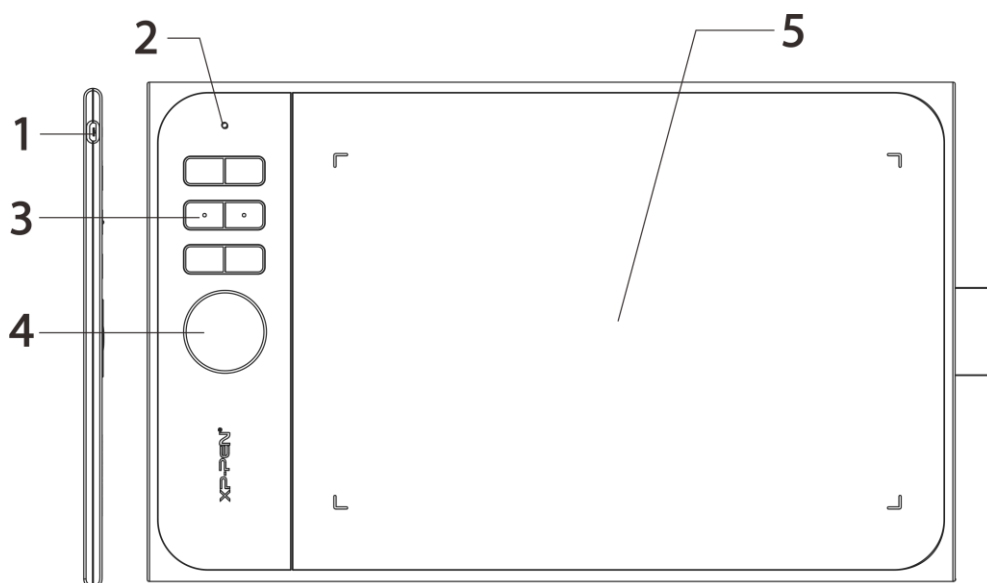
[Mac](#)

[VI. Driver Uninstallation](#)

[Windows](#)

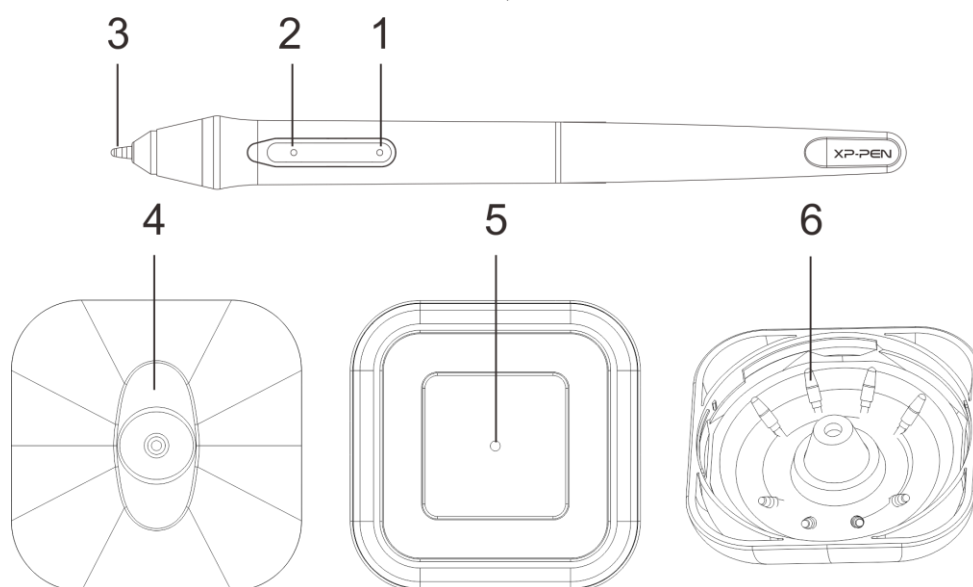
[Mac](#)

{ I. Product Overview }



- (1). USB port
- (2). Status indicator light
 - a. White, blinking: Stylus is in range of, but not touching, the working area.
 - b. White, solid: Stylus is touching the working area.
 - c. No light: Stylus is out of detection range.
- (3). Shortcut keys
- (4). Roller key
- (5). Active area

{ II. Stylus }



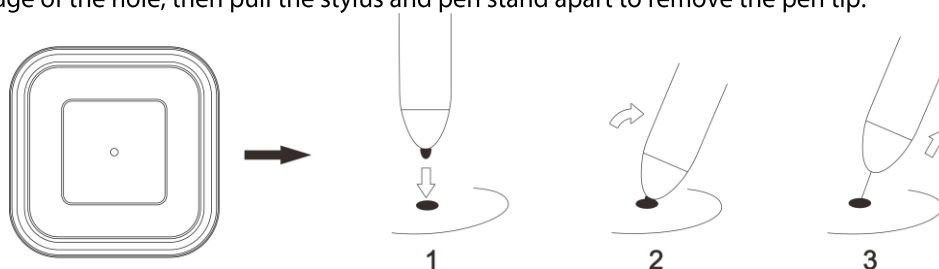
- (1). Barrel button 2
- (2). Barrel button 1
- (3). Pen tip
- (4). Pen stand (Top)
- (5). Pen tip changer
- (6). Replacement pen tips

NOTES:

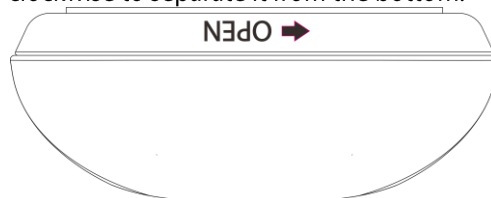
- a. Barrel button functions can be customized in the tablet's driver settings.
- b. Stylus does not use a battery or require charging.

{ III. Pen tip replacement }

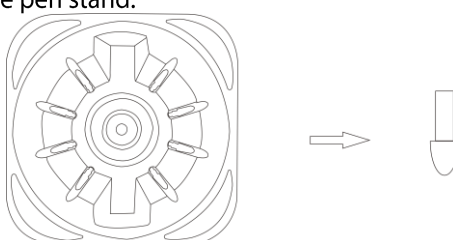
1. Turn your pen stand upside-down and insert the stylus tip into the hole in its center. Tilt the stylus slightly so that the tip catches on the edge of the hole, then pull the stylus and pen stand apart to remove the pen tip.



2. Twist the pen stand's top half counter-clockwise to separate it from the bottom.



3. Take a new pen tip from the inside of the pen stand.



4. Push the new pen tip straight into the stylus.



{ IV. Driver installation }

Supported operating systems:

Windows 10, 8 or 7

Mac OS X 10.10 or above

NOTES:

- (1). **Disable any antivirus or firewall software and close any non-essential background software before beginning the installation.**
Some software, such as OneDrive and Dropbox, may monopolize important files and prevent a successful installation.
On Windows computers, check the system tray on the bottom-right of the screen and close any software unrelated to your computer hardware.
- (2). **Uninstall any existing tablet software before attempting to install the Star 06C driver. Other tablet drivers will conflict with the Star 06C driver or prevent installation entirely.**
- (3). **You can download the latest driver version from the XP-Pen website (www.xp-pen.com).**
If you choose to download the driver from the website, be sure to extract the .zip file contents before running ".exe" or ".pkg."

Windows

- (1). Connect the Star 06C to your computer with the included USB cable.
- (2). Please download the Star 06C latest driver from the support section of our website, www.xp-pen.com
- (3). After a successful installation, the driver's icon (🖊️) will appear in your system tray and on your desktop. If the icon is not present, uninstall the driver, reboot, and repeat step 2.

Mac

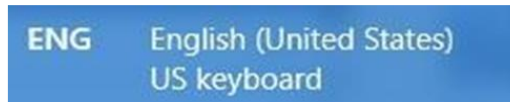
- (1). Connect the Star 06C to your computer with the included USB cable.
- (2). Please download the Star 06C latest driver from the support section of our website, www.xp-pen.com
- (3). Extract the ".zip" file contents before running ".pkg".



{ V. Driver installation }

Notes:

- (a). The Star 06C's express keys are designed to work with US English keyboards. Keys may not function correctly with other keyboard languages.



- (b). By default, the Star 06C's express keys are mapped to standard Photoshop keyboard shortcuts. Keys can be customized to function efficiently in other software.

Windows

1. Barrel Button Settings

You may customize the functions of your tablet pen's barrel buttons here. Use the "Function Key" option to program custom keystrokes.

2. Click Sensitivity & Current Pen Pressure

Lighter sensitivity means that digital pressure level will rise with less applied physical pressure. Current Pen Pressure shows the current pressure level being exerted on your tablet and can be used to test pen pressure.

3. Mouse Mode

Absolute (Pen) Mode: Standard tablet mode; Each point of the tablet's work area corresponds to an absolute point on your computer display.

Relative (Mouse) Mode: Mouse mode; The tablet's work area does not correspond to absolute points on your computer display and your pen works as a standard mouse.

4. Current Screen

The Star 06C may be configured for use with single, dual or more monitors. And the dimensions of your tablet's on-screen work area can be changed here.

5. Right & Left Hand Mode

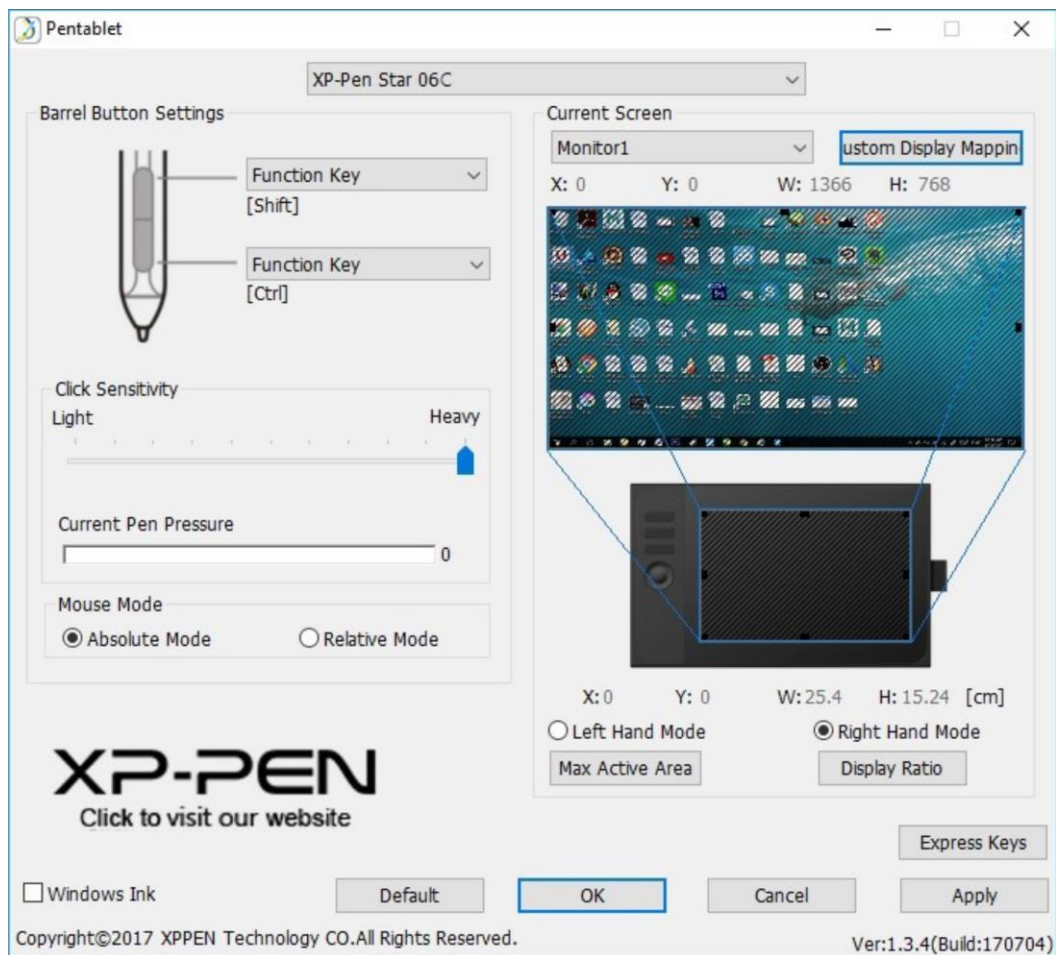
The Star 06C is set up for right-handed use by default. When switching to left-handed mode, be sure to rotate the actual physical tablet 180 degrees to place its shortcut keys on its opposite side.

6. Windows Ink

Windows Ink capability can be toggled on and off here. Enabling this will allow support for Windows Ink and applications that run using Windows Ink.

7. Express Keys

Use Function Key to set custom keystrokes for your shortcut keys.



Mac

1. Pen

In this tab, you may customize the functions of your stylus's barrel buttons, adjust pressure sensitivity and test your pen pressure.

Click "Default Button Setting" to revert to manufacturer settings.

2. Monitor

The "Monitor" tab allows you to configure your tablet for use with single, dual or more monitors. The tablet can also be configured to use only a portion of your display.

3. Tablet Area

You may adjust your tablet's on-screen working area in this tab.

"Full Monitor" automatically selects the largest possible working area. "Screen Ratio" adjusts the tablet's on-screen working area to match your monitor's resolution.

The Star 06C can also be configured for right or left-handed use in this tab. When switching to left-handed mode, be sure to rotate the actual physical tablet 180 degrees to place its shortcut keys on its opposite side.

Absolute and Relative Modes

Absolute (Pen) Mode: Standard tablet mode; Each point of the tablet's work area corresponds to an absolute point on your computer display.

Relative (Mouse) Mode: Mouse mode; The tablet's work area does not correspond to absolute points on your computer display and works as a standard mouse.

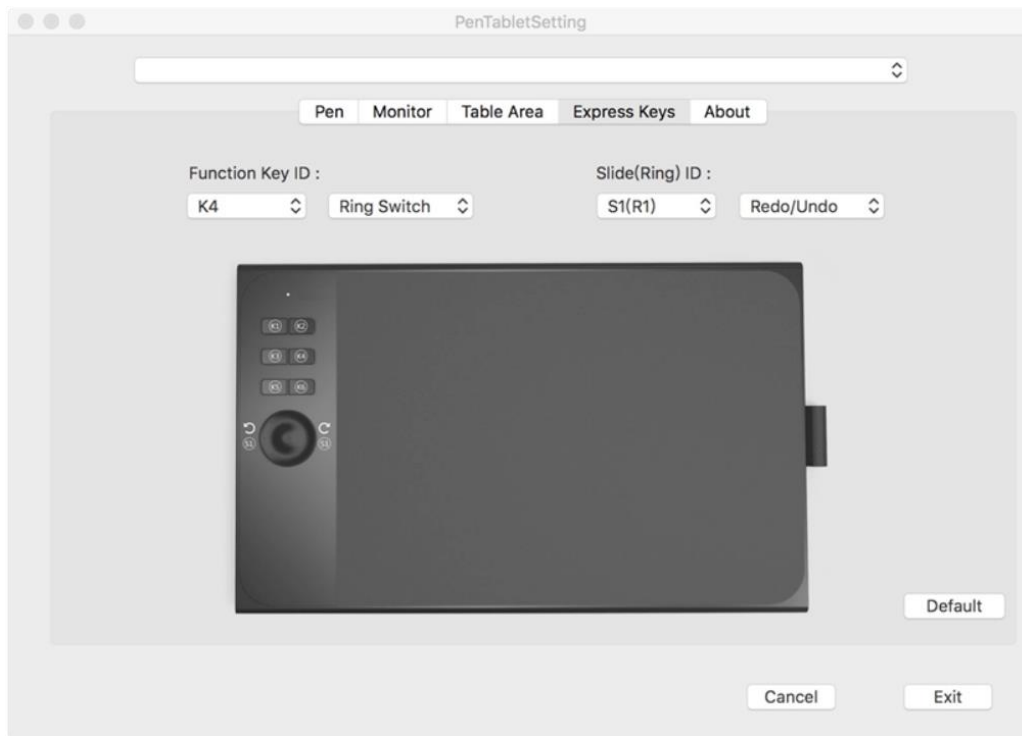
4. Express Keys

In the Express Keys tab, you may choose your preferred functions for the Star 06C's shortcut keys. Use the "Reset Customer Defined" option to program custom keystrokes.

Click "Slide Function Defined (Multi-select)" to add or remove functions from the K1~K6 key's queue.

5. About

This tab displays the current version of your driver software.



{ VI. Driver Uninstallation }

Windows

In the Start menu, open [Settings] → [Apps & features]. Find “Pentablet” and click “Uninstall.” Follow the on-screen instructions.

Mac

Open [Finder] → [Application] → [Pen Tablet], then click “Uninstall Pen Tablet” and follow the on-screen instructions.